



April 2021 Landscape Management Update



Mountain Park Ranch





Mountain Park Ranch

Maintenance Update

Maintenance

- The SLM cutbacks are just about completed, we have just finished coming down Ranch Circle South.
- The remaining areas to be completed are from Recreation Center #1 east to Mountain Sky, through to Chandler Blvd. and north to northeast up 41st Place and the Golden Poppy Park areas.
- Aeration is being performed this week to all turf areas prior to applying granular fertilizer. (see page #2)
- Porter services, Having two Porters service the community has made a difference and we are covering more area daily.
- Work Orders: We had 4 official WO and a handful of email request this month,.
- Rye turf: will be dyeing off over the next 30 days and the Bermuda Turf will start to take off.
- We discovered a homeless encampment on top of the monument at 44th St. and Ray rd. Richard ran the two guys off and cleaned up their mess. (See page #3)
- Tree Trimming updates on Pages 4 through 7. We have finished week 8 of the 10-week trimming cycle.
- Date Palms will be trimmed in Mid June based on seed pod production; the palms are always trimmed after the seed pods protrude. It is healthier for the longevity of the Date Palms to not over trim them and also saves in cost only being trimmed one time per year.



Mountain Park Ranch

Maintenance Update

Turf Aeration will be completed this week and an application of granular 21-0-0 fertilizer will be applied. The turf will set back slightly as the Rye Turf dies off from the heat and the Bermuda Turf reestablishes for the summer





Mountain Park Ranch

Homeless encampment cleaned up ,located above the monument on 44th St. and Ray.

- Debris collected and hauled away from this area.
 - We are checking this upper area weekly for further concerns.





Mountain Park Ranch

Tree Trimming over the last 30 days

Mountain Park Ranch Week 7

Goal: 10 Weeks

Address:
14837 S 25th Way
Phoenix, AZ 85048

Trees:
Blue Palo Verde
Cottonwood
Desert Museum
Mesquite
Sisso
Sweet Acacia
Willow Acacia

Daily Cycle:





Mountain Park Ranch

Tree Trimming over the last 30 days



Mountain Park Ranch

Tree Trimming over the last 30 days



Mountain Park Ranch Week 8 - Day 1 & Day 2



Mountain Park Ranch Week 8 - Day 3 & 4





Mountain Park Ranch Tree Trimming 10 Week Plan Update

We are currently through Week 8 and have 2 More weeks to finish the 2021 Tree Trimming Cycle. We will be out through the remainder of the year for Management Request , Potential Storm Damage and Palm Trimming.

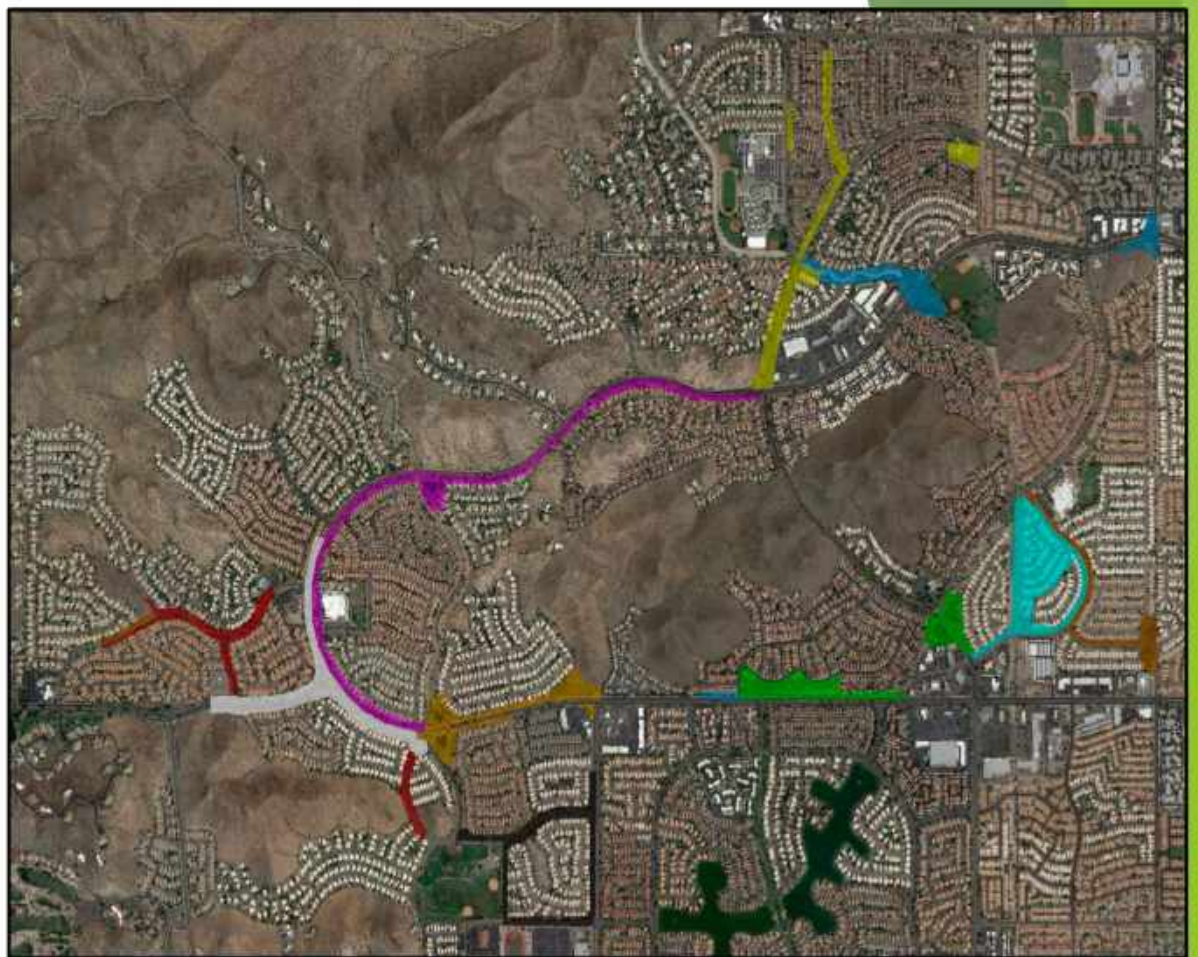
Mountain Park Ranch Trimming 2021

Goal: 10 Weeks

Address:
14837 S 25th Way
Phoenix, AZ 85048

Trees:
Blue Palo Verde
Cottonwood
Desert Museum
Mesquite
Sisso
Sweet Acacia
Willow Acacia

Daily Cycle:





Mountain Park Ranch

Maintenance Update

Water savings are trending great, allowing for a surplus budget for use this coming summer.

2021 WATER MANAGEMENT WORKSHEET

	SQ FOOTAGE	AREA	DENSITY	ACREAGE	COST PER KGALS
TURF SF	740,520	40.3%	100%	17.0	\$0.87
PLANT SF	802,880	54.7%	20%	20.6	
TOTAL AREA	1,633,500		TOTAL	37.6	

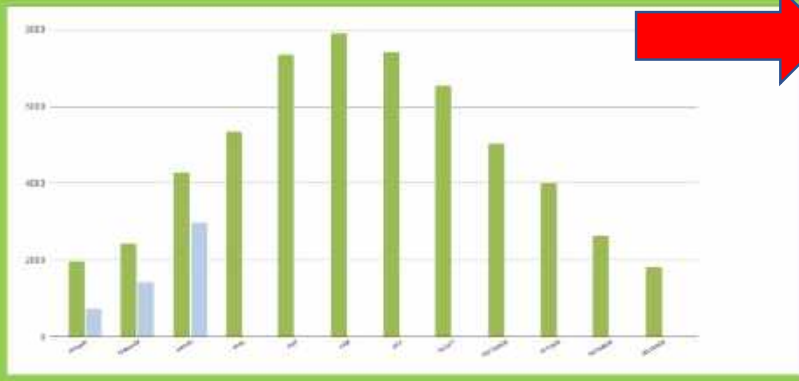
MONTH	Turf Budget		Plants Budget		Total Budgeted		Actual Usage	
	WATER BUDGET (KGALS)	COST PER MONTH	WATER BUDGET (KGALS)	COST PER MONTH	WATER BUDGET (KGALS)	WATER BUDGET	ACTUAL KGAL	ACTUAL COST
JANUARY	1,437.8	\$9,440.14	518.8	\$164.12	1,956.7	\$8,194.26	736	\$4,981.83
FEBRUARY	1,783.4	\$10,468.67	543.5	\$191.18	2,426.9	\$10,669.83	1422	\$7,274.15
MARCH	3,141.0	\$18,437.90	1,133.4	\$336.89	4,274.4	\$18,774.59	2582	\$15,299.28
APRIL	3,755.5	\$22,044.75	1,590.9	\$469.64	5,346.4	\$22,514.39	0	\$0.00
MAY	4,513.4	\$28,254.54	2,532.8	\$752.42	7,046.2	\$29,006.96	0	\$0.00
JUNE	5,183.6	\$30,477.67	2,727.8	\$810.30	7,911.3	\$31,287.96	0	\$0.00
JULY	4,846.3	\$28,585.03	2,566.6	\$760.09	7,412.9	\$29,305.72	0	\$0.00
AUGUST	4,284.4	\$25,149.66	2,254.3	\$669.74	6,538.9	\$25,819.38	0	\$0.00
SEPTEMBER	3,243.9	\$20,802.79	1,491.9	\$443.19	4,735.8	\$19,369.98	0	\$0.00
OCTOBER	2,931.2	\$17,206.29	1,057.7	\$314.20	3,988.9	\$17,520.49	0	\$0.00
NOVEMBER	2,002.9	\$11,757.25	732.4	\$187.86	2,735.3	\$11,945.06	0	\$0.00
DECEMBER	1,389.4	\$8,169.52	438.7	\$130.31	1,828.0	\$8,289.83	0	\$0.00
ANNUAL TOTAL	39,132.0	\$229,710.45	17,872.7	\$5,220.29	56,705.7	\$234,930.74	5140	\$ 27,145.30



Mountain Park Ranch HOA

Tracking	
DOLLAR TO BUDGET	% TO BUDGET
\$ (4,012.43)	53%
\$ (3,385.64)	68%
\$ (2,485.31)	81%
\$ -	0%
\$ -	0%
\$ -	0%
\$ -	0%
\$ -	0%
\$ -	0%
\$ -	0%
\$ -	0%
\$ -	0%
\$ -	0%
\$ -	0%
\$ -	0%
\$ (10,883.38)	12%

YTD TOTAL (KGALS)				RAINFALL			
2018	2019	2020	2021	2018	2019	2020	2021
4220	0	446	738	0.21	0.14	0.19	0.88
3221	0	1181	1422	0.52	1.76	1.24	0.20
4014	0	723	2682	0.04	0.05	0.91	0.37
5445	0	1474	0	0.03	0.08	0.08	
6560	0	2907	0	0.03	0.10	0.03	
6491	0	1904	0	0.03	0.08	0.03	
10091	0	5314	0	0.10	0.17	0.46	
7404	0	5607	0	1.89	0.34	0.89	
5153	0	3025	0	0.43	0.22	0.09	
4258	0	3591	0	0.38	0.00	1.03	
3440	0	2404	0	0.88	1.88	1.04	
3368	0	1848	0	0.14	0.19		
67702	0	38797	0140	0.47	0.28	3.82	1.28



YTD TO BUDGET	YTD DIFF +/- 2018
-\$10,883.38	\$ 27,145.30
Historical Annual Totals	
2018	\$ 209,630.01
2019	\$ -
2020	\$ 175,490.25
2021	\$ 27,145.30



**BUDGET BASED ON IMPLEMENTING A LANDSCAPE WATER MANAGEMENT PLAN AND TECHNOLOGY
 ***AVERAGE RAINFALL IS BASED ON 4" ANNUALLY



Thank You for Allowing ProQual Landscaping to continue to be your trusted advisor for Landscape and Water Management