



December 2022 Landscape Management Update



Mountain Park Ranch





Mountain Park Ranch

Maintenance Update

Maintenance:

- The 2022 overseeding process has had its challenges with the colder than usual temperatures. However, it has matured nicely, and we have applied the first fertilizer application and spot seeded and mulched a few areas still responding. See page #2
- Work Orders: this month we had only 5 and a handful from the office.
- We had a request to investigate the top of the hill along Ray Rd. East of S. Canyon Drive and remnants from kids or homeless. Cleaned up and checked and nothing further since we cleaned it up. Page #5
- Tree trimming , after sight inspection found the 13 trees along Ray rd. were missed and they have now been trimmed. See page #6
- Water Management , water usage continues to be closely monitored and year to date we are **\$28K** below estimated budget. We dd go backwards after colder overseeding time and 3 mainline breaks. See page # 3 for example of a break and page # 7 Water Tracker Information.

Looking ahead:

- The team will continue to rotate through washes and make sure they are of any obstructions and can flow properly.
- SLM cutbacks will continue to be performed as we continue our cycle through the community.

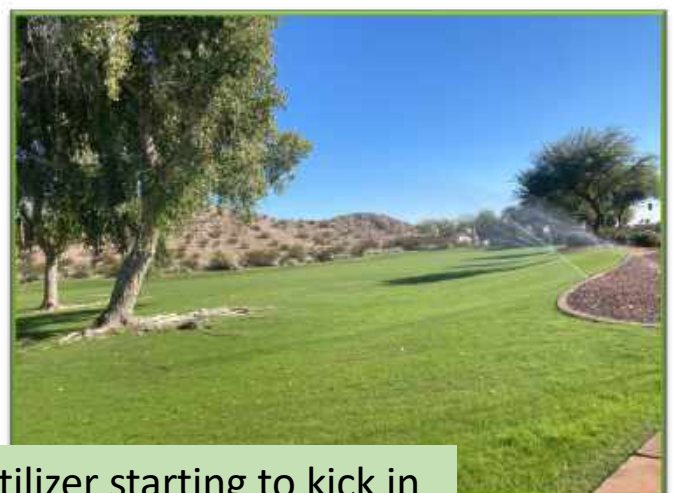
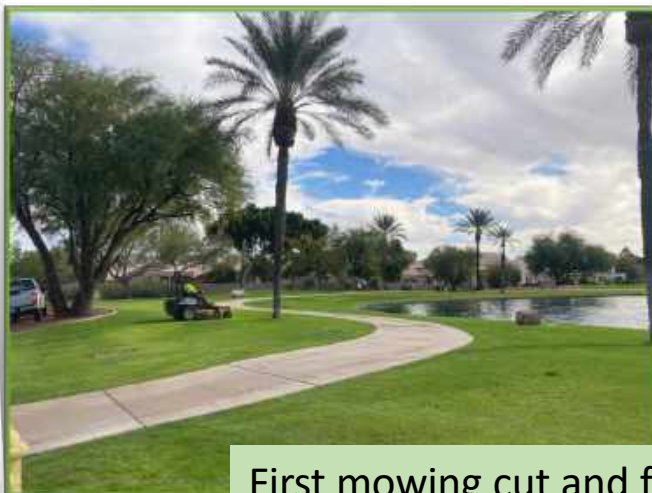
I wanted to wish everyone a Merry Christmas and Happy New Year 🌲

Homes: 6000 - Plus Commercial Locations
Residents: Over 20,000
Granite: 35 acres
Turf: 17 acres
Trees: 2667
Irrigation Controllers: 63
Irrigation Valves: 784
Sprinkler Heads: 1,460
B : 63
V **1** Common Area Landscape **\$18,530,000**





Spot Seeding and Fertilized was taken care of the 3rd week of November



First mowing cut and fertilizer starting to kick in



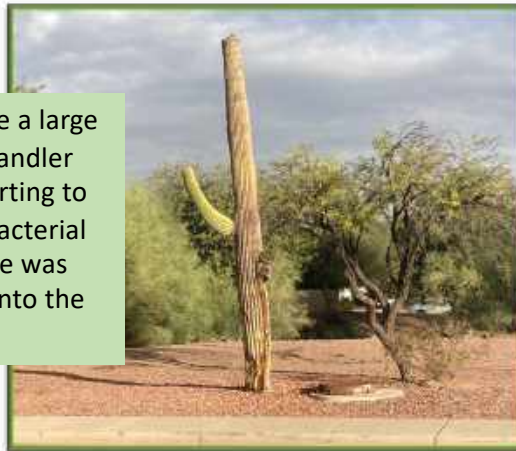
Mountain Park Ranch

Maintenance Update / Weekly Task



Replaced 4 Pygmy Palms at Recreation Center #1

We had to remove a large Saguaro along Chandler Blvd. as it was starting to lean, and it had Bacterial Necrosis and there was a fear of it falling into the roadway.



Significant water loss at Rec. Center #3 with a mainline break on the weekend of 11/26/2022

Mountain Park Ranch

Maintenance Update / Wash Cleaning



General maintenance never slows down for the team raking the sand and leaf debris removal is huge this time of year



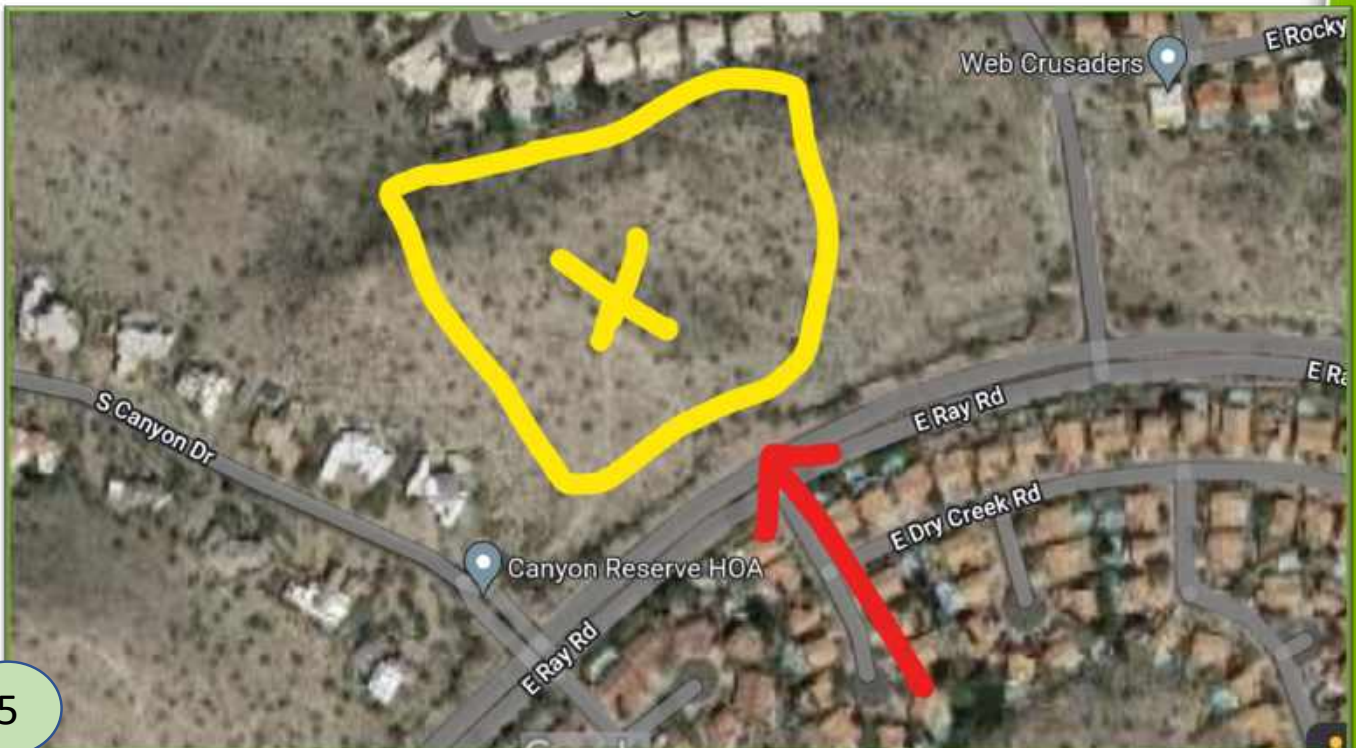
Drain located in Mountain Canyon Condos cleaned after storms



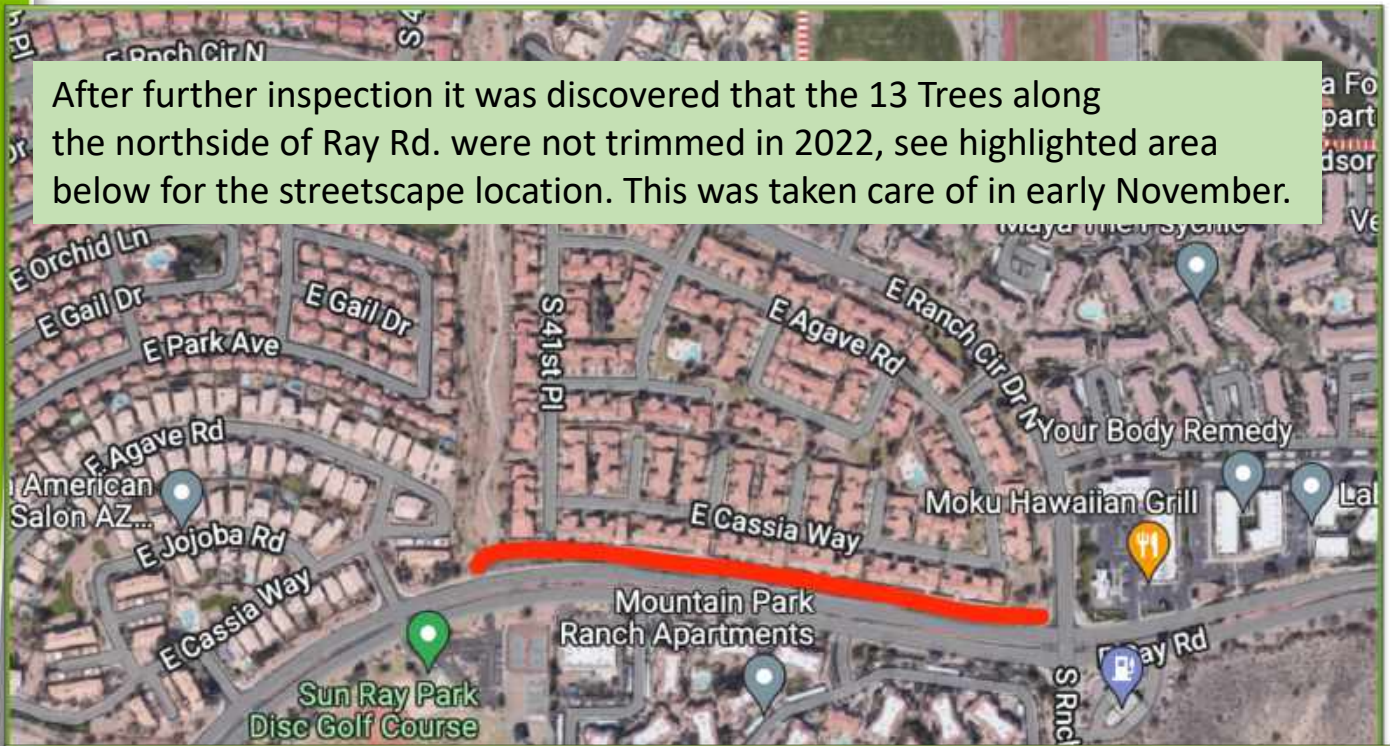
We lost a portion of a Pygmy Palm at Recreation Center #1, fell from wet soil and high winds.



Above pictures are what was found after it was reported to the MPR Office that there may have been a temporary home on top of the hillside. We have taken care of the concern and checked twice and so far, nothing has Returned.



After further inspection it was discovered that the 13 Trees along the northside of Ray Rd. were not trimmed in 2022, see highlighted area below for the streetscape location. This was taken care of in early November.



MPR - Additional Trimming - Ray Rd & Ranch Cir N



Mountain Park Ranch

Maintenance Update / Water Monitoring

2022 WATER MANAGEMENT WORKSHEET

| BO FOOTAGE | AREA | DENSITY | ACREAGE | COST PER KGALS |
|-----------------------|-------|---------|---------|----------------|
| TURF SF: 740,320 | 45.3% | 100% | 17.0 | \$8.78 |
| PLANT SF: 892,580 | 54.7% | 30% | 20.5 | |
| TOTAL AREA: 1,633,900 | | TOTAL: | 37.0 | |



Mountain Park Ranch HOA

| MONTH | Turf Budget | | Plants Budget | | Total Budgeted | | Actual Usage | |
|--------------|---------------------|----------------|---------------------|----------------|---------------------|--------------|--------------|---------------|
| | WATER BUDGET (KGAL) | COST PER MONTH | WATER BUDGET (KGAL) | COST PER MONTH | WATER BUDGET (KGAL) | WATER BUDGET | ACTUAL KGAL | ACTUAL COST |
| JANUARY | 1,437.8 | \$12,624.26 | 518.8 | \$154.12 | 1,956.7 | \$12,778.38 | 2075 | \$11,292.84 |
| FEBRUARY | 1,783.4 | \$15,656.42 | 643.5 | \$191.16 | 2,426.9 | \$15,849.58 | 2234 | \$12,165.97 |
| MARCH | 3,141.0 | \$27,578.32 | 1,133.4 | \$336.89 | 4,274.4 | \$27,915.01 | 3045 | \$17,671.26 |
| APRIL | 3,755.5 | \$32,973.24 | 1,580.9 | \$469.64 | 5,336.4 | \$33,442.88 | 5156 | \$28,438.07 |
| MAY | 4,813.4 | \$42,261.48 | 2,532.8 | \$752.42 | 7,346.2 | \$43,013.89 | 7060 | \$40,365.89 |
| JUNE | 5,183.6 | \$45,612.36 | 2,727.6 | \$810.30 | 7,911.3 | \$46,322.66 | 8336 | \$47,443.66 |
| JULY | 4,896.3 | \$42,725.89 | 2,560.5 | \$750.89 | 7,426.9 | \$43,486.57 | 6766 | \$33,255.09 |
| AUGUST | 4,284.4 | \$37,617.36 | 2,254.5 | \$669.74 | 6,538.9 | \$38,287.09 | 6209 | \$35,713.21 |
| SEPTEMBER | 3,543.9 | \$31,115.69 | 1,491.9 | \$443.18 | 5,035.8 | \$31,558.78 | 3899 | \$22,047.15 |
| OCTOBER | 2,931.2 | \$25,736.16 | 1,057.7 | \$314.20 | 3,988.9 | \$26,050.35 | 4845 | \$26,438.73 |
| NOVEMBER | 2,002.9 | \$17,585.73 | 632.4 | \$187.86 | 2,635.3 | \$17,773.58 | 9272 | \$32,852.06 |
| DECEMBER | 1,399.4 | \$12,198.55 | 438.7 | \$130.31 | 1,838.0 | \$12,328.86 | 0 | \$0.00 |
| ANNUAL TOTAL | 39,133.0 | \$343,587.35 | 17,572.7 | \$5,220.29 | 56,795.7 | \$348,807.65 | 53897 | \$ 307,684.85 |

| Tracking | |
|------------------|-------------|
| DOLLAR TO BUDGET | % TO BUDGET |
| \$ (1,485.54) | 88% |
| \$ (3,683.61) | 77% |
| \$ (10,243.75) | 63% |
| \$ (5,003.91) | 85% |
| \$ (2,848.00) | 94% |
| \$ 1,121.02 | 102% |
| \$ (10,231.48) | 76% |
| \$ (2,573.88) | 93% |
| \$ (9,511.63) | 70% |
| \$ 388.38 | 101% |
| \$ 15,078.48 | 185% |
| \$ - | 0% |
| \$ (28,793.94) | 88% |

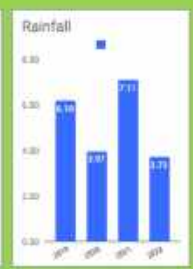
| YTD TOTAL (KGALS) | | | | RAINFALL | | | |
|-------------------|--------|-------|-------|----------|------|------|------|
| 2019 | 2020 | 2021 | 2022 | 2019 | 2020 | 2021 | 2022 |
| 0 | 448 | 888 | 2078 | 0.74 | 0.19 | 0.66 | 0.12 |
| 0 | 1,118 | 1422 | 2234 | 1.79 | 1.34 | 0.00 | 0.28 |
| 0 | 733 | 3661 | 3045 | 0.05 | 0.91 | 0.07 | 0.15 |
| 0 | 1,474 | 5548 | 5156 | 0.09 | 0.08 | 0.01 | 0.00 |
| 0 | 2,907 | 6014 | 7060 | 0.10 | 0.00 | 0.00 | 0.00 |
| 0 | 3,984 | 6421 | 8336 | 0.00 | 0.00 | 0.17 | 0.33 |
| 0 | 5,314 | 4738 | 6766 | 0.17 | 0.10 | 1.73 | 0.23 |
| 0 | 5,607 | 3457 | 6209 | 0.24 | 0.96 | 1.84 | 0.93 |
| 0 | 5,932 | 2552 | 3899 | 0.25 | 0.00 | 0.76 | 0.78 |
| 0 | 2,581 | 8551 | 4845 | 0.00 | 0.00 | 0.32 | 0.09 |
| 0 | 2,000 | 4601 | 5272 | 1.05 | 0.00 | 0.00 | |
| 0 | 5,948 | 1686 | 0 | 0.70 | 0.45 | 1.83 | |
| 0 | 34,797 | 49838 | 53897 | 6.18 | 3.97 | 7.11 | 3.73 |



| YTD TO BUDGET | YOY DIFF +/- 2018 |
|---------------------|----------------------|
| -\$28,793.94 | \$ 307,684.85 |

| Historical Annual Totals | |
|--------------------------|---------------|
| 2018 | \$ - |
| 2020 | \$ 175,459.28 |
| 2021 | \$ 226,309.02 |
| 2022 | \$ 27,684.85 |

| YTD TO BUDGET | YOY DIFF +/- 2018 |
|---------------------|----------------------|
| -\$28,793.94 | \$ 307,684.85 |



*BUDGET BASED ON IMPLEMENTING A LANDSCAPER'S WATER MANAGEMENT PLAN AND TECHNOLOGY
 **AVERAGE RAINFALL IS BASED ON IT ANNUALLY

Our continuing trend took a hit with a few factors during the overseeding process. Colder Temperatures caused the seed to germinate slower than normal and we had to water longer than normal. We also had (3) significant mainline breaks that also contributed to a higher than budgeted usage. We are still contract to save about \$30K below budget for the full year.

