



June 2025 Landscape Management Update



Mountain Park Ranch



Maintenance:

- General blowing and raking of the granite will be the focus through the next service cycles.
- Turf watering has been set back to 5 days per week .
- Non – Overseeded Turf is starting to really respond with all the treatments and aeration. View on Page #2.
- The crew continued to inspect and walk the washes on a rotational basis : Pages 3 & 4.
- Daves wash cleaning and and SLM cutbacks can be viewed on page # 5
- General shrub care and detail work can be reviewed on page #6
- In depth description on the Turf Management program can be reviewed on page # 7
- Decomposed Granite Pre- emergent applications for all 80 Acres as been applied for assistance in weed abatement and prevention.
- **Looking ahead:**
- **Thunderhill rd.:** Currently working on a revegetation project for all along Thunderhill Rd. for consideration and approval for planting this Fall. **The layout created will be presented at the meeting this month.**



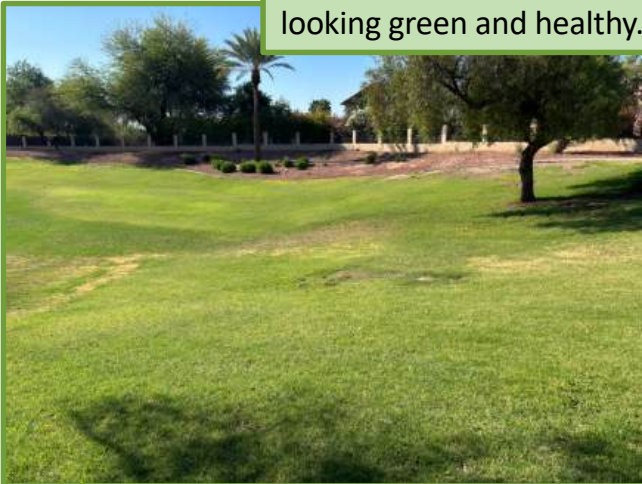
Homes: 6000 - Plus Commercial Locations
Residents: Over 20,000
Granite: 35 acres
Turf: 17 acres
Trees: 2667
Irrigation Controllers: 63
Irrigation Valves: 784
Sprinkler Heads: 1,460
Backflows: 63
Valve of Common Area Landscape **\$18,530,000**



Mountain Park Ranch Turf Management



Non overseeded turf is starting to wake up and respond looking green and healthy.



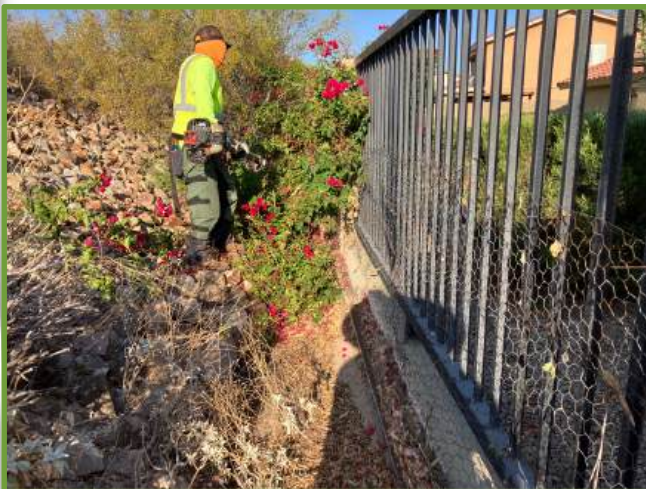
The turf that was Overseeded has transitioned as well.



Mountain Park Ranch

Wash Management

This month's wash cleanings



Throughout the community we have numerous washes that are not in the rear of the homes: these washes are cleaned every 4 to 6 month depending on rain events.



Mountain Park Ranch

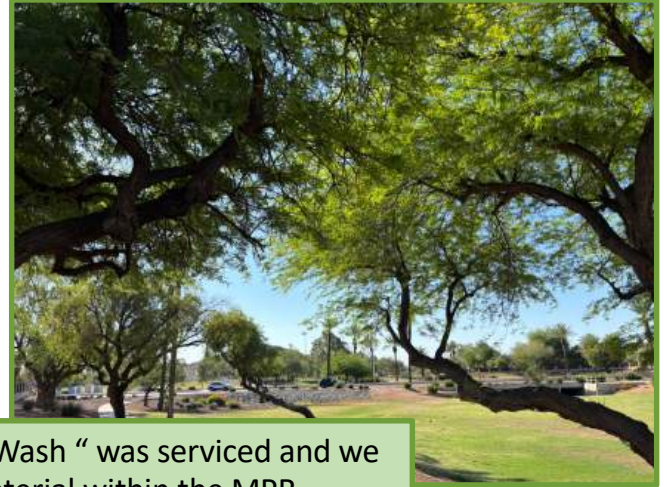
Wash Management

This month's wash cleanings / continued



Mountain Park Ranch

Wash Management



The area known as " Daves Wash " was serviced and we removed all combustibile material within the MPR Community Property.



Mountain Park Ranch

General Maintenance Areas



General maintenance during the last 30 days



Mountain Park Ranch

Turf Maintenance

All turf aeration and granular fertilizers have been applied to the turf

ProQual Turf Management Program

	JAN	FEB	MAR	APR	MAY	JUNE	JULY	AUG	SEP	OCT	NOV	DEC
Granular Fertilization - Balanced Fertilizer						included					included	
Specialty Spray - Foliar Fertilizer	included	included	included	included	included		included	included				included
Weed Control (Turf)	included						included					
Aeration of turf					included							
Soil Amendment Application					included		included	included				
Premium Organic Nutrients					included		included	included				

The summer turf program has been completed and now we are closely watching for any voids in irrigation coverage and proper color for summer turf.



The Importance of Turf Aeration Each Summer:

Turf aeration is a crucial maintenance practice for healthy lawns, especially during the summer when heat stress and heavy foot traffic can compact the soil. Aeration involves perforating the soil with small holes to allow air, water, and nutrients to penetrate the grass roots. This simple yet powerful process helps alleviate compaction, encourages deeper root growth, and enhances the lawn's overall resilience.

Here's why summer aeration matters:

Improves Root Development: Aeration gives roots more space to grow and access essential resources.

Enhances Water Absorption: It reduces water runoff and improves moisture penetration, especially valuable during dry months.

Reduces Soil Compaction: Frequent use of lawns in summer (sports, gatherings, mowing) compacts soil, and aeration helps counteract that.

Boosts Nutrient Uptake: By opening up the soil, fertilizers and natural nutrients reach roots more effectively.

Promotes Thicker, Greener Turf: Healthier roots result in a denser and more vibrant lawn.



Mountain Park Ranch

Granite Pre-emergent Application

ProQual Spray Log

No.

5/30/2025

00584

Job Details

Alvaro - App Lic #150790
Mountain Park Ranch HOA

Qualifying Party: Eric Wozniak
QA Lic #: 30955

Date
05/30/2025
Time
01:09 PM

Weather Conditions
Temperature (F)
96
Wind (mph)
5

GPS Location
<http://maps.google.com?q=33.311085,-111.995232&z=1>
Location Description
Common areas

Spray Details

Application Type
Granite Application
Work Being Performed
Pre emergent

Chemicals / Rate Used
Pre-M Aquacap 2.5 gallons per 100 gallons of water
Inlay 1 gallon of water per 100 gallons of water
Amount Sprayed (gallons)
350

Photo 1
Have all areas been completed?
No, we will have to come back
Map of Area Completed today

No.

6/3/2025

00586

Job Details

Alvaro - App Lic #150790
Mountain Park Ranch HOA

Qualifying Party: Eric Wozniak
QA Lic #: 30955

Date
06/03/2025
Time
07:49 AM

Weather Conditions
Temperature (F)
77
Wind (mph)
2

GPS Location
<http://maps.google.com?q=33.308914,-112.029259&z=1>
Location Description
Common areas

Spray Details

Application Type
Granite Application
Work Being Performed
Pre emergent

Chemicals / Rate Used
Pre-M Aqua cap 2.5 gallons per 100 gallons of water
Inlay 1 gallon per 100 gallons of water
Amount Sprayed (gallons)
70

Photo 1
Have all areas been completed?
Yes
Map of Area Completed today

